



# Why Imaging? Imaging Components

**LAW  
Overview**

**Install  
LAW**



**The Power  
of Imaging  
Technology**

**ICE  
Information**

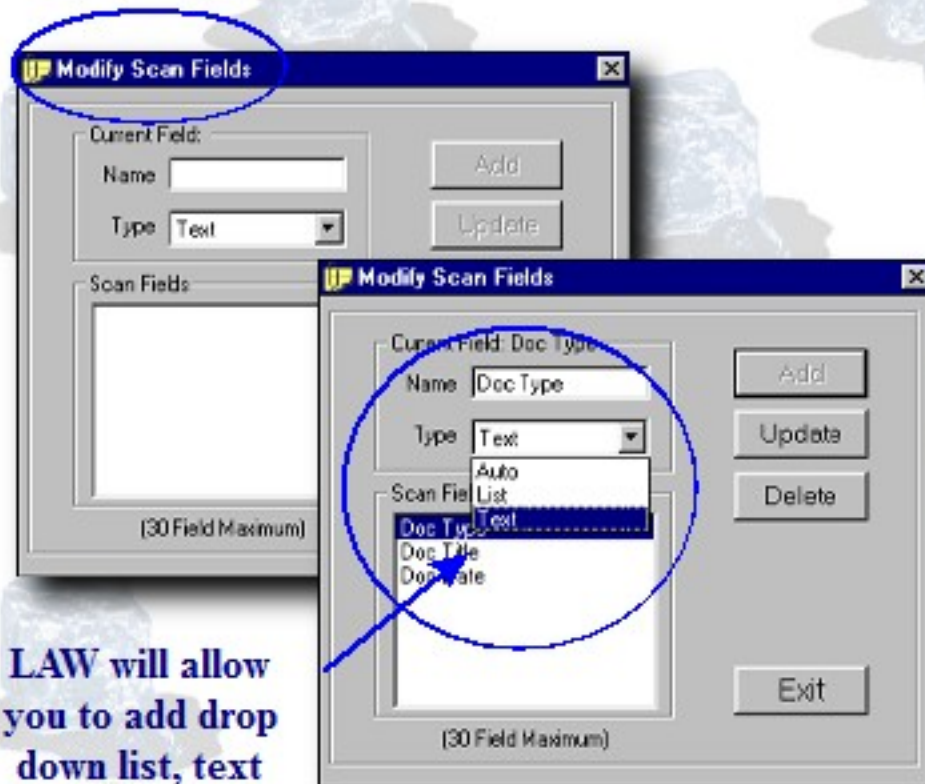
**Exit  
Demo**



# Modifying Scan Fields

Image Capture

After you have created a 'new case,' filled in your 'case information' LAW will prompt you to select the 'scan index fields.'



LAW will allow you to add drop down list, text fields and auto fields.

## Scan Options

to make the most of your scanning project.

## Scanning & Quality Control

You can switch between 'legal' and 'letter' size with functions keys.

**Scan**

- Select Scanner...
- Scanner Settings...
- Scan Options**
  - Page Size**
    - Letter - 8.5 x 11 in F8
    - Legal - 8.5 x 14 in F9
    - Other...
  - Flatbed
  - ✓ Feeder - Simplex F11
  - Feeder - Duplex F12
  - ✓ Auto-Deskew
  - Barcode Breaks
  - Drop Blank Pages
  - Rotate**
    - None
    - 90 degrees
    - ✓ 180 degrees
    - 270 degrees
  - Stop on Last
- Scan New F3
- Append F5
- Scan Duplex F7

Scan Options are provided to help increase scanning efficiency. The scan options can be manipulated by selecting Scan Options from the Scan menu and selecting the desired item.

[Previous](#)[Exit](#)[Main Menu](#)[Next](#)

[Capture Systems](#)[Image Viewers](#)[Databases](#)[Retrieval Programs](#)[Summary](#)

## Capture Systems

The imaging process begins with an initial scan of original documents. Image capture software is widely available for many specific applications but our primary focus is on the legal industry, specifically the unique and specialized demands of litigation imaging.

Image Capture Engineering is an outgrowth of Pro Copy, a legal copying service bureau with years of experience in litigation document production. We have worked to address the concerns and solve the problems you confront daily.

Legal Access Ware has been designed from the viewpoint of a legal copy center. Every aspect of efficient litigation copying has been integrated into LAW, making it not only extraordinarily functional but also simple to operate. Your current copier operators can become proficient scanner operators in minutes.

[Previous](#)[Exit](#)[Main Menu](#)[Next](#)